

Simsurveys Validation Benchmark

AMA Prior Authorization Survey
Live vs Synthetic Results

Executive Summary

This report compares publicly available live results from the American Medical Association (AMA) Prior Authorization survey with synthetic results generated by the Simsurveys platform. All respondent-facing survey questions from the original instrument are included without omission or modification.

Sample targets and quotas. Synthetic data were generated using the same targeting and quota constraints as the live AMA survey. Target respondents: n=1,000. Eligibility criteria included physicians providing 20 or more hours of patient care per week and physicians who complete prior authorizations during a typical week of practice.

Interpreting KL Divergence. KL divergence measures the difference between two response distributions. For synthetic survey data, values below -0.10 typically indicate strong alignment, while values below -0.15 are generally considered acceptable and directionally consistent.

Q1. For those patients whose treatment requires prior authorization, how often does this process delay access to necessary care?

KL Divergence: 0.039

Q2. How often do issues related to the prior authorization process lead to patients abandoning their recommended course of treatment?

KL Divergence: 0.040

Q3. For those patients whose treatment requires prior authorization, what is your perception of the overall impact of this process on patient clinical outcomes?

KL Divergence: 0.602

Q4. How has the number of prior authorization denials changed over the last five years?

KL Divergence: 0.337

Q5. How has the frequency of peer-to-peer reviews during the prior authorization process changed over the last five years?

KL Divergence: 0.021

Q6. How often does the health plan's "peer" have the appropriate qualifications to assess and make a determination regarding the prior authorization request?

KL Divergence: 0.048

Q7. Please consider how your patients' utilization of health care resources is impacted by the prior authorization process. In your experience, how often does the prior authorization process lead to higher overall utilization of health care resources?

KL Divergence: 0.266

Q8. In which of the following ways has the prior authorization process led to higher overall utilization of health care resources for patients in your care?

KL Divergence: 0.458

Q9. How often does a prior authorization delay or denial lead to a patient paying out of pocket for a medication that you prescribe (i.e., the health plan does not cover the prescription and the patient pays the full cost)?

KL Divergence: 0.226

Q10. How would you describe the burden associated with prior authorization in your practice for UnitedHealthcare?

KL Divergence: 0.270

Q11. How would you describe the burden associated with prior authorization in your practice for Humana?

KL Divergence: 0.092

Q12. How would you describe the burden associated with prior authorization in your practice for Anthem/Elevance?

KL Divergence: 0.031

Q13. How would you describe the burden associated with prior authorization in your practice for Aetna?

KL Divergence: 0.019

Q14. How would you describe the burden associated with prior authorization in your practice for Blue Cross Blue Shield?

KL Divergence: 0.172

Q15. How would you describe the burden associated with prior authorization in your practice for Cigna?

KL Divergence: 0.168

Target_Hours. Do you provide 20 or more hours of patient care per week?

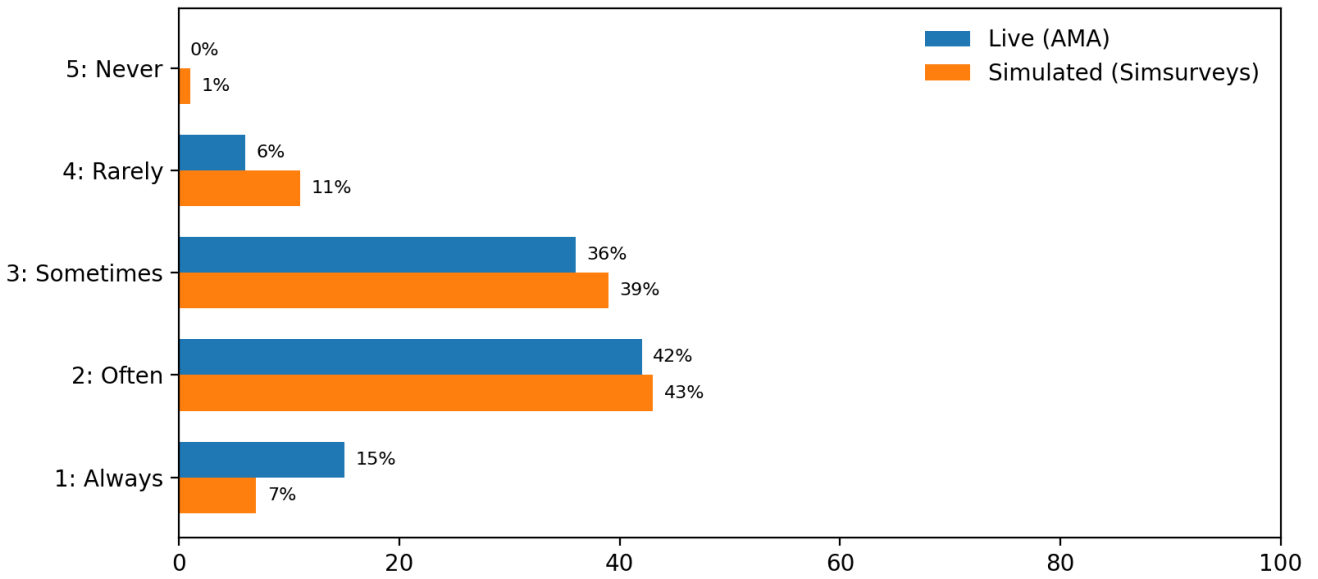
KL Divergence: 0.000

Target_PA. Do you complete prior authorizations during a typical week of practice?

KL Divergence: 0.000

Q1.

For those patients whose treatment requires prior authorization, how often does this process delay access to necessary care?



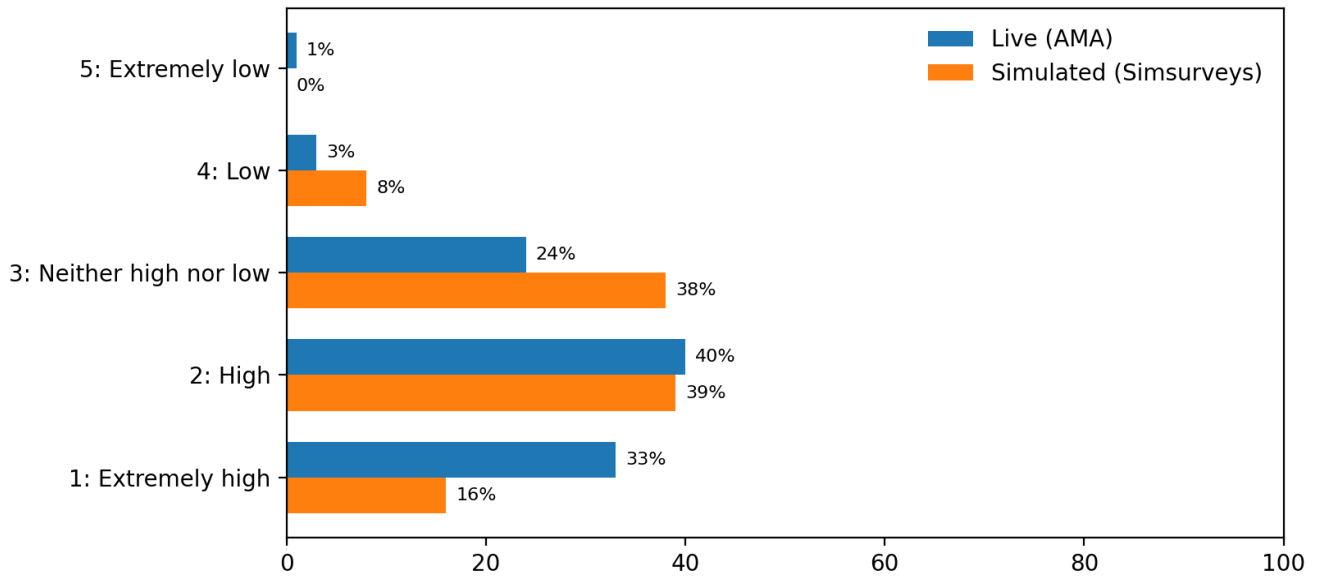
Simulated responses closely track live results across response categories.

KL Divergence (Live ■ Simulated): 0.039

Sample size: Live n=1,000 | Simulated n=1,000

Q10.

How would you describe the burden associated with prior authorization in your practice for UnitedHealthcare?



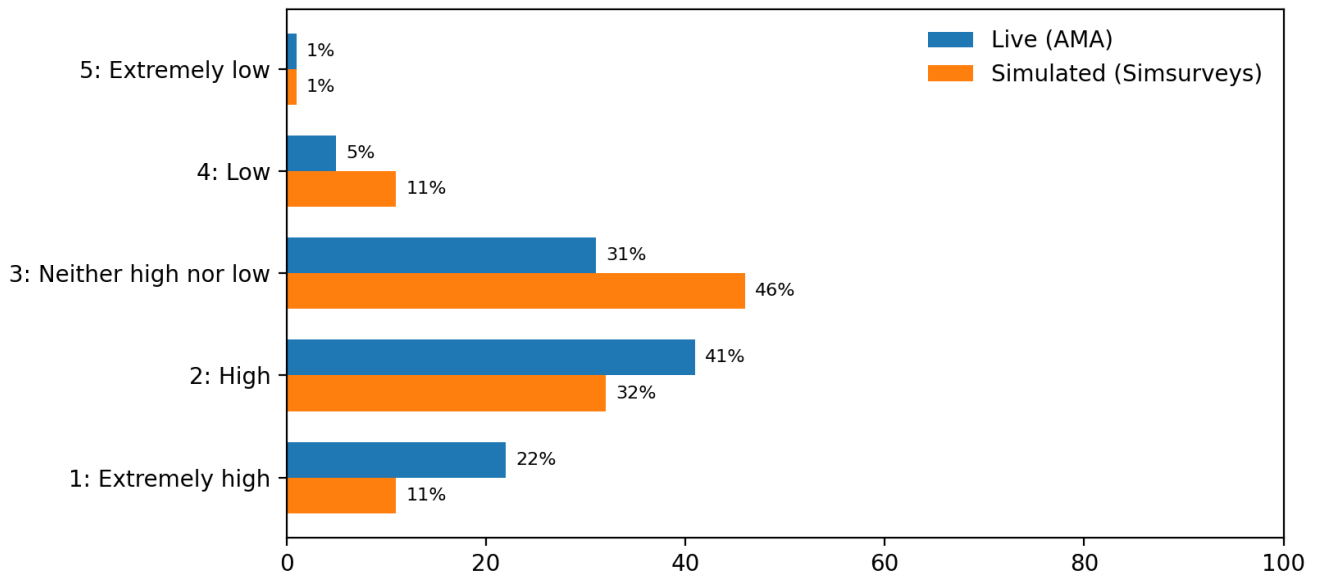
Simulated responses closely track live results across response categories.

KL Divergence (Live ■ Simulated): 0.270

Sample size: Live n=1,000 | Simulated n=1,000

Q11.

How would you describe the burden associated with prior authorization in your practice for Humana?



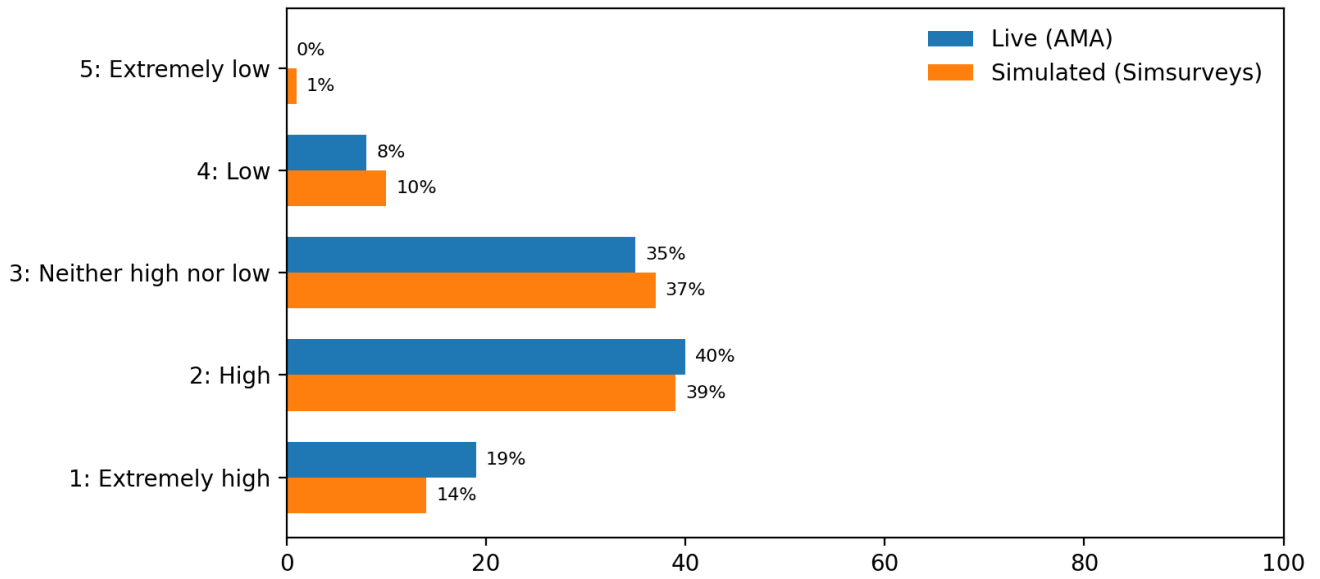
Simulated responses closely track live results across response categories.

KL Divergence (Live ■ Simulated): 0.092

Sample size: Live n=1,000 | Simulated n=1,000

Q12.

How would you describe the burden associated with prior authorization in your practice for Anthem/Elevance?



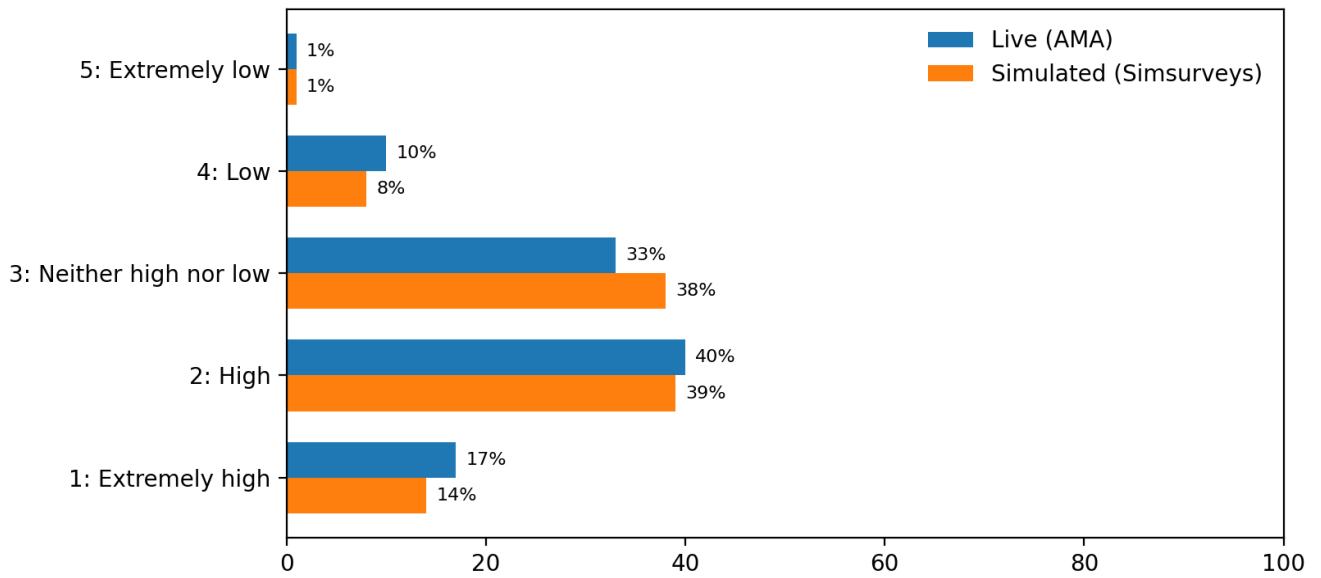
Simulated responses closely track live results across response categories.

KL Divergence (Live ■ Simulated): 0.031

Sample size: Live n=1,000 | Simulated n=1,000

Q13.

How would you describe the burden associated with prior authorization in your practice for Aetna?



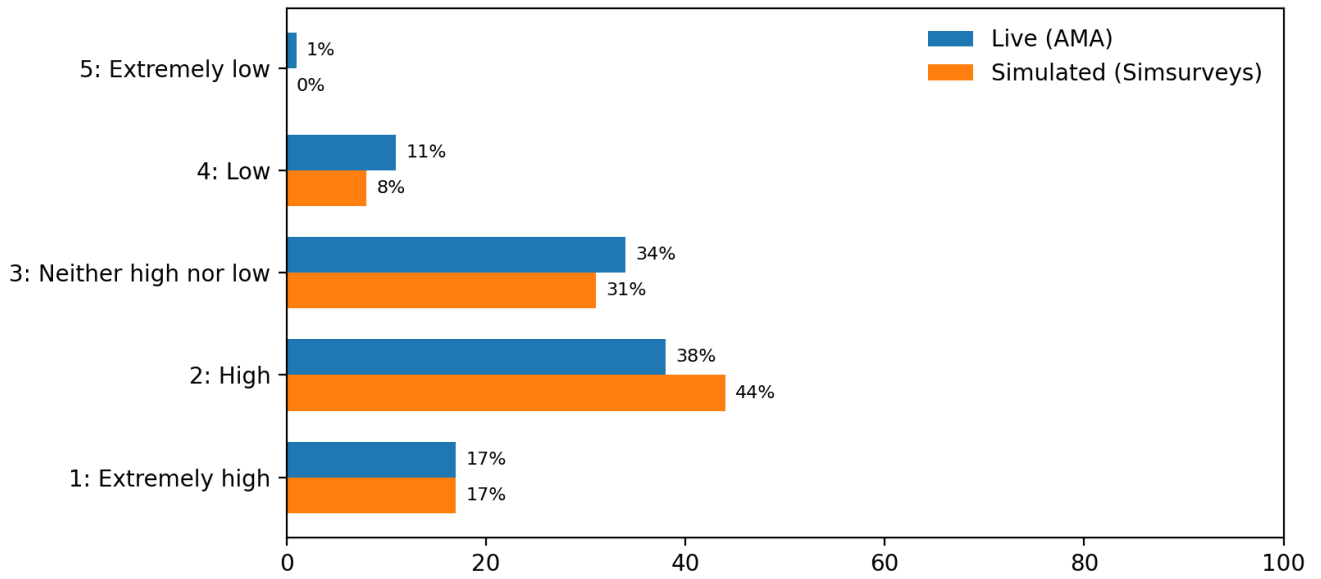
Simulated responses closely track live results across response categories.

KL Divergence (Live ■ Simulated): 0.019

Sample size: Live n=1,000 | Simulated n=1,000

Q14.

How would you describe the burden associated with prior authorization in your practice for Blue Cross Blue Shield?



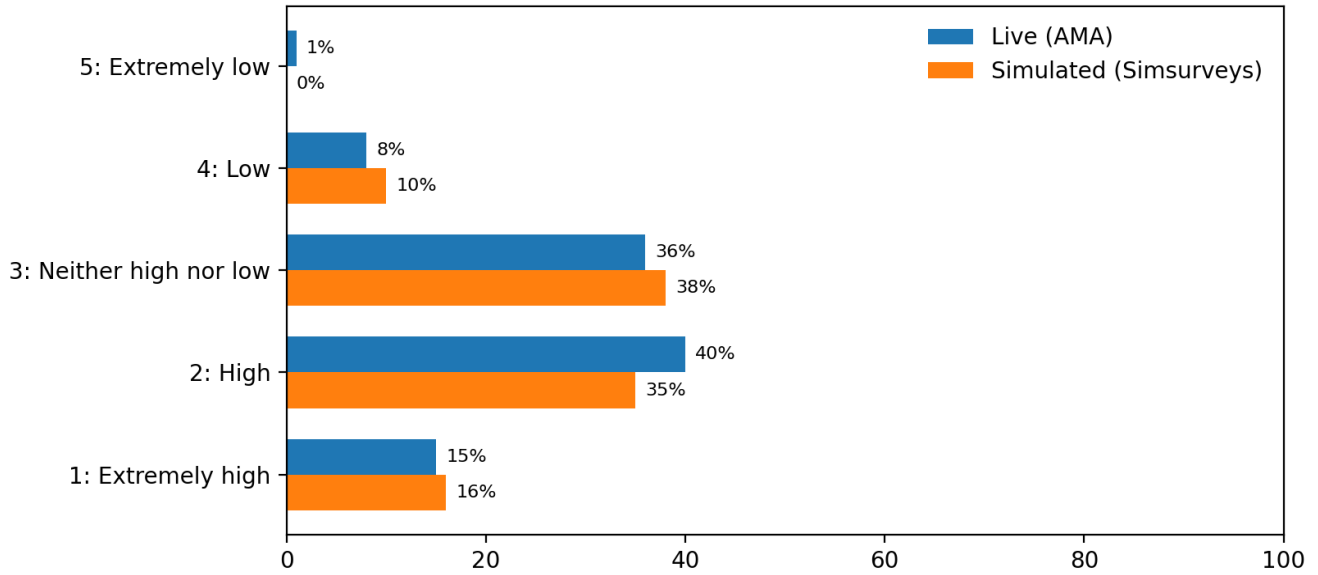
Simulated responses closely track live results across response categories.

KL Divergence (Live ■ Simulated): 0.172

Sample size: Live n=1,000 | Simulated n=1,000

Q15.

How would you describe the burden associated with prior authorization in your practice for Cigna?



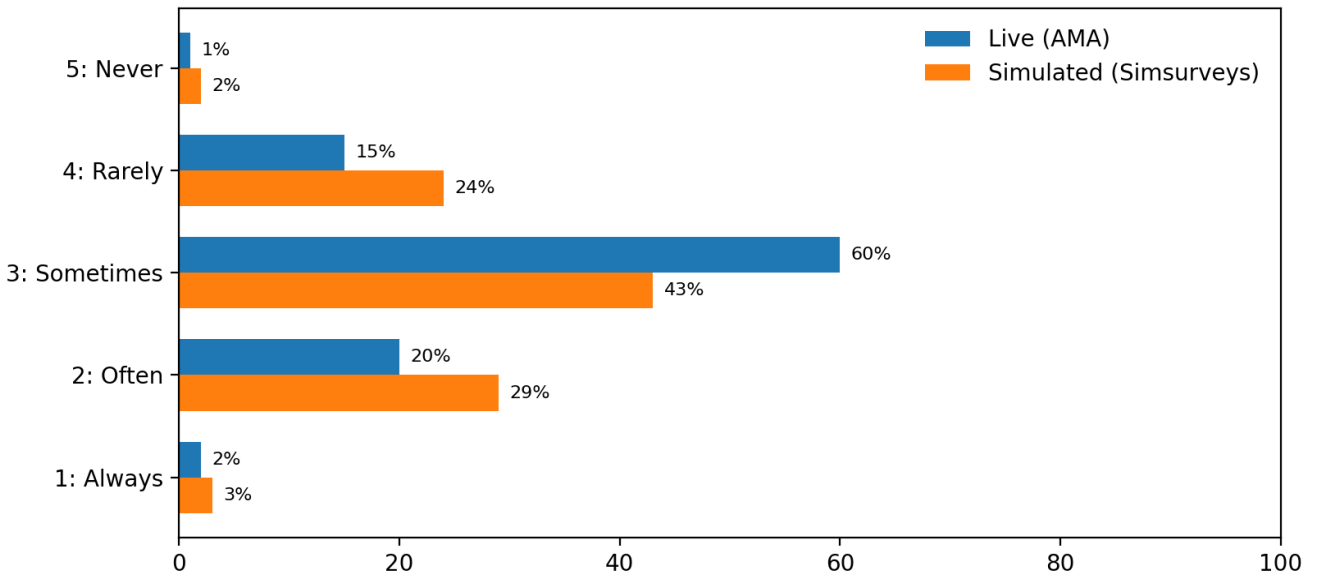
Simulated responses closely track live results across response categories.

KL Divergence (Live ■ Simulated): 0.168

Sample size: Live n=1,000 | Simulated n=1,000

Q2.

How often do issues related to the prior authorization process lead to patients abandoning their recommended course of treatment?



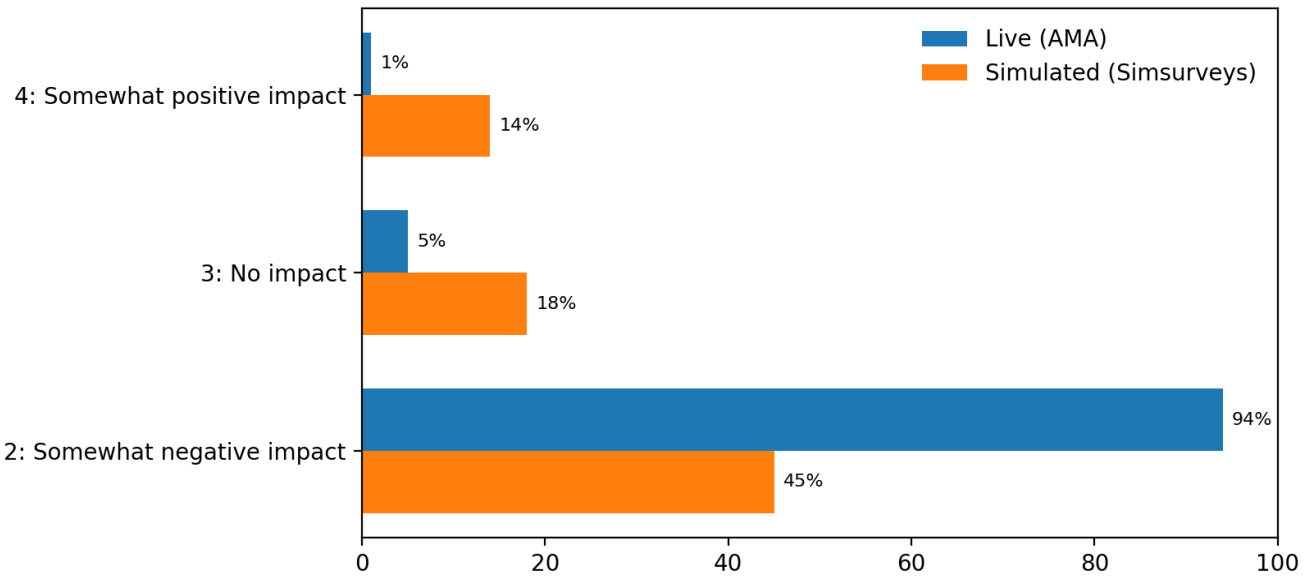
Simulated responses closely track live results across response categories.

KL Divergence (Live ■ Simulated): 0.040

Sample size: Live n=1,000 | Simulated n=1,000

Q3.

For those patients whose treatment requires prior authorization, what is your perception of the overall impact of this process on patient clinical outcomes?



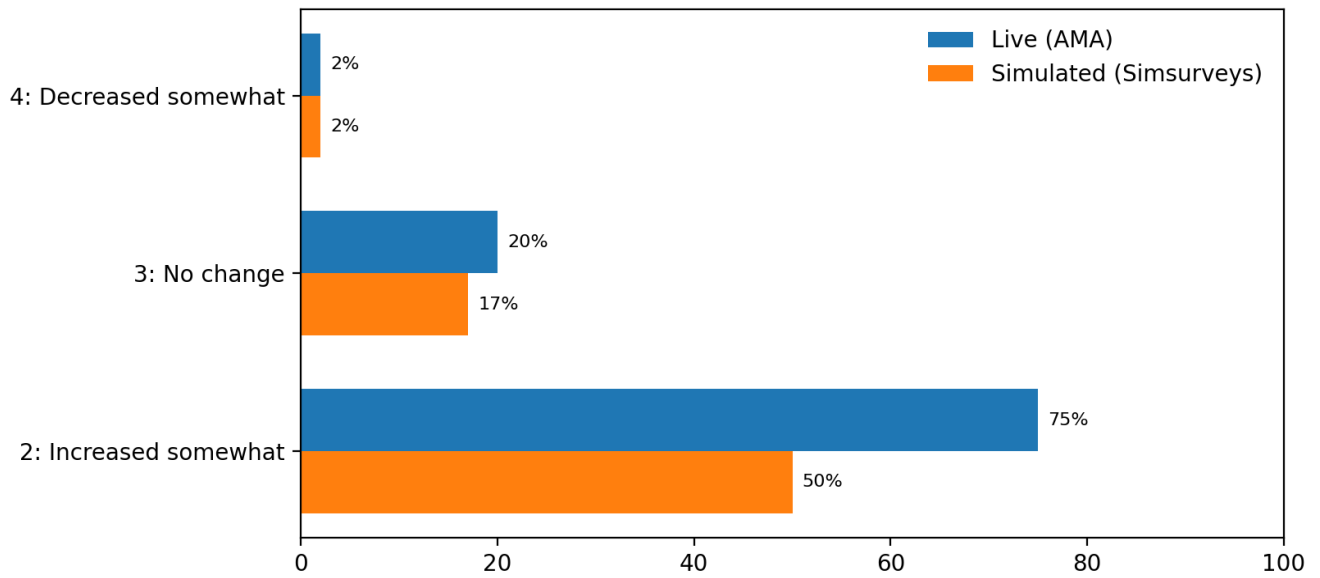
Simulated responses closely track live results across response categories.

KL Divergence (Live ■ Simulated): 0.602

Sample size: Live n=1,000 | Simulated n=1,000

Q4.

How has the number of prior authorization denials changed over the last five years?



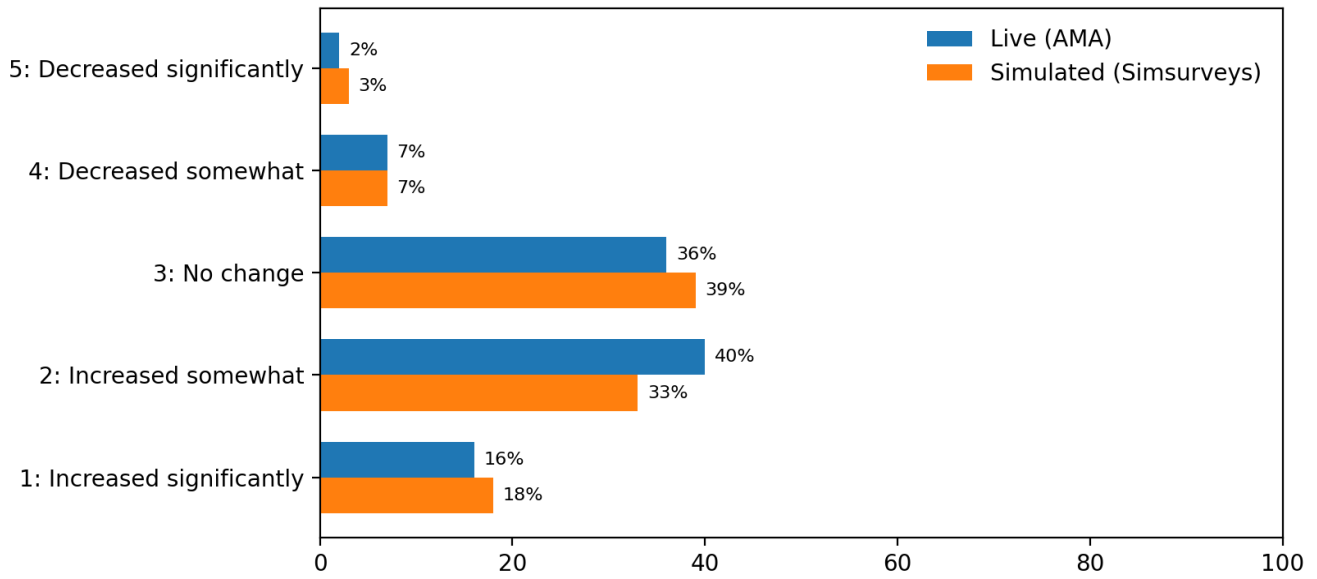
Simulated responses closely track live results across response categories.

KL Divergence (Live ■ Simulated): 0.337

Sample size: Live n=1,000 | Simulated n=1,000

Q5.

How has the frequency of peer-to-peer reviews during the prior authorization process changed over the last five years?



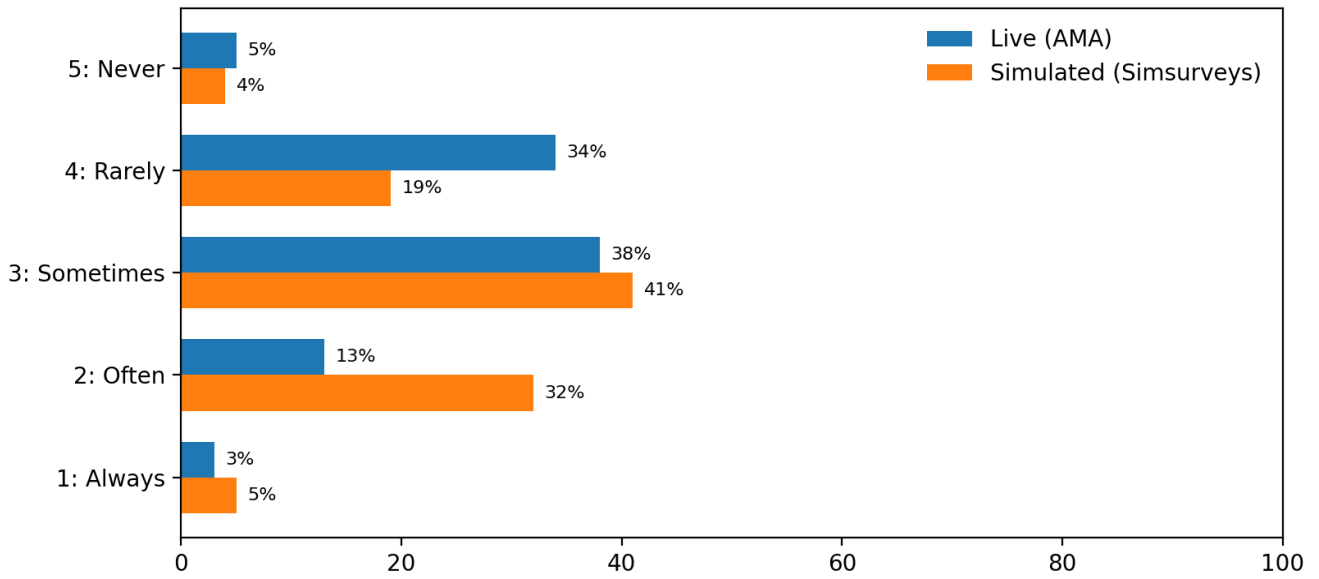
Simulated responses closely track live results across response categories.

KL Divergence (Live ■ Simulated): 0.021

Sample size: Live n=1,000 | Simulated n=1,000

Q6.

How often does the health plan's "peer" have the appropriate qualifications to assess and make a determination regarding the prior authorization request?



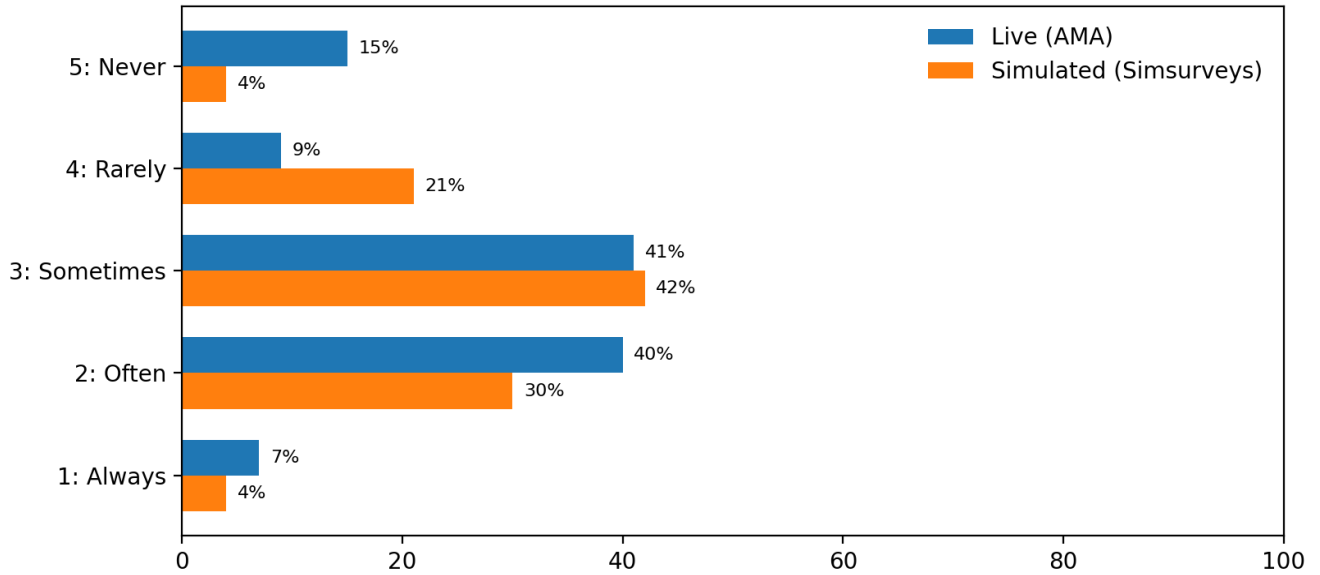
Simulated responses closely track live results across response categories.

KL Divergence (Live ■ Simulated): 0.048

Sample size: Live n=1,000 | Simulated n=1,000

Q7.

Please consider how your patients' utilization of health care resources is impacted by the prior authorization process. In your experience, how often does the prior authorization process lead to higher overall utilization of health care resources?



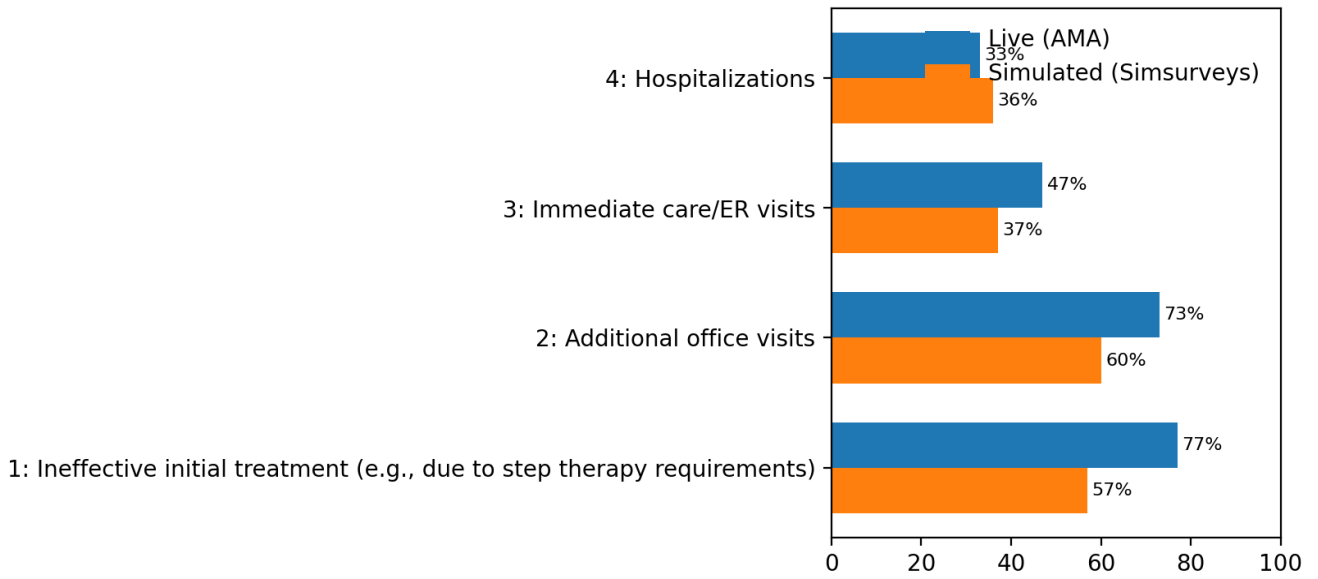
Simulated responses closely track live results across response categories.

KL Divergence (Live ■ Simulated): 0.266

Sample size: Live n=1,000 | Simulated n=1,000

Q8.

In which of the following ways has the prior authorization process led to higher overall utilization of health care resources for patients in your care?



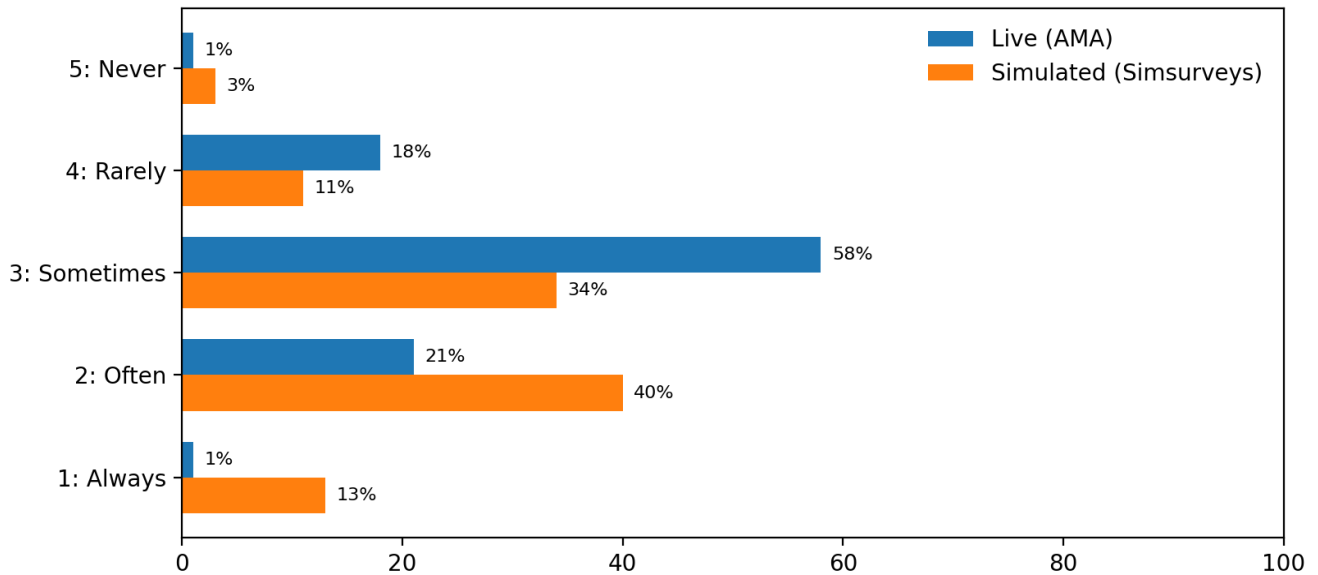
Simulated responses closely track live results across response categories.

KL Divergence (Live ■ Simulated): 0.458

Sample size: Live n=1,000 | Simulated n=1,000

Q9.

How often does a prior authorization delay or denial lead to a patient paying out of pocket for a medication that you prescribe (i.e., the health plan does not cover the prescription and the patient pays the full cost)?



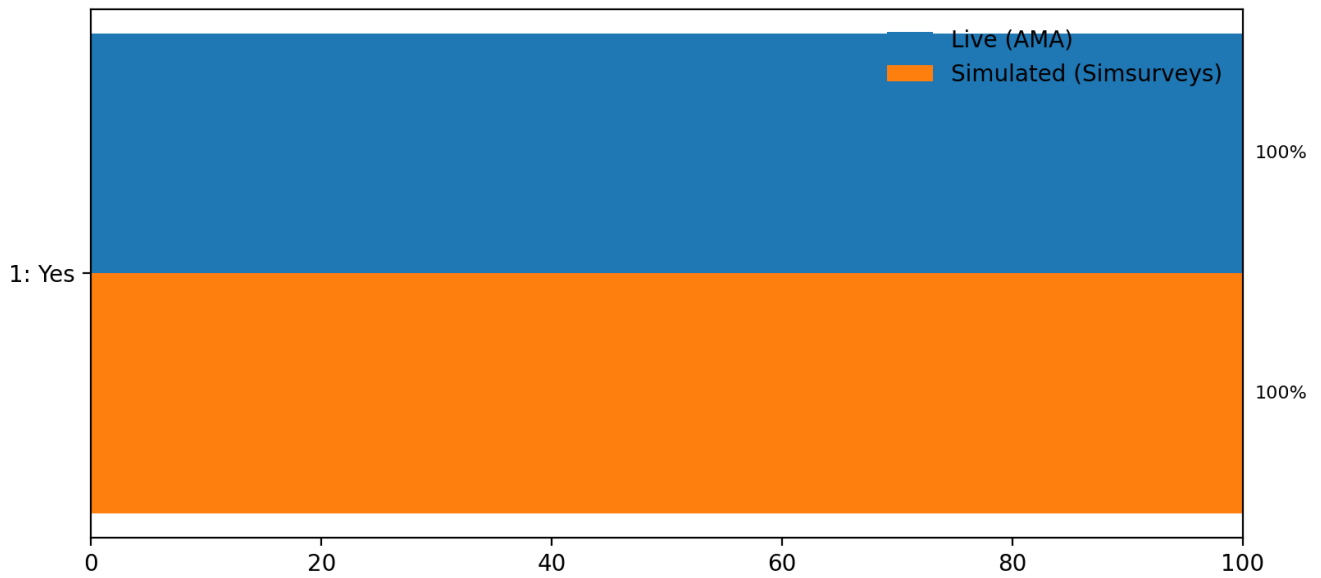
Simulated responses closely track live results across response categories.

KL Divergence (Live ■ Simulated): 0.226

Sample size: Live n=1,000 | Simulated n=1,000

Target_Hours.

Do you provide 20 or more hours of patient care per week?



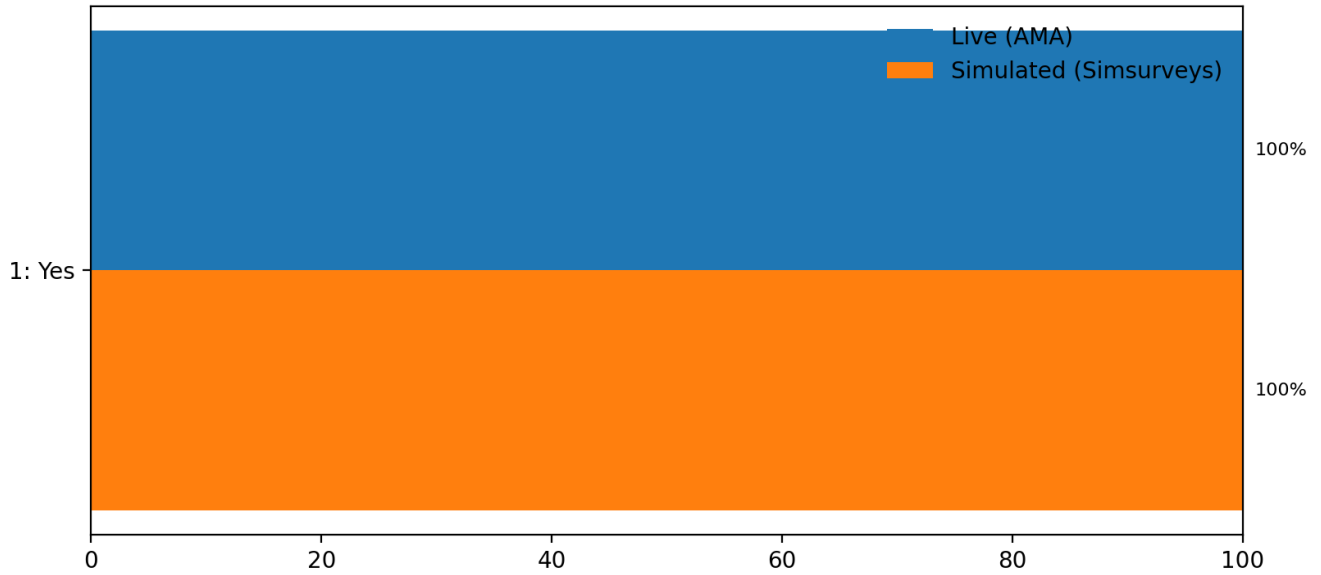
Simulated responses closely track live results across response categories.

KL Divergence (Live ■ Simulated): 0.000

Sample size: Live n=1,000 | Simulated n=1,000

Target_PA.

Do you complete prior authorizations during a typical week of practice?



Simulated responses closely track live results across response categories.

KL Divergence (Live ■ Simulated): 0.000

Sample size: Live n=1,000 | Simulated n=1,000